

Yale SCHOOL OF PUBLIC HEALTH

YEAR IN REVIEW

Academic Year 2023-2024



DEAN'S NOTE

“As we mark our school’s transition into independence after more than 108 years, I am more excited than ever to see what the future holds.”



To our community at the Yale School of Public Health,

Reflecting on the 2023-2024 school year – my first year as Dean of YSPH – I am filled with gratitude. Our students, alumni, faculty, and staff exemplify the very best of our field: a commitment to justice, innovation, community, leadership, and inclusion. Our ability to combine the highest quality science with authentic, collaborative local and global partnerships is exactly where academic public health should be.

I hope you will enjoy learning about some of our community’s truly extraordinary achievements in this Year in Review, just as much as I have enjoyed getting to know the people who are doing this work.

Our research accomplishments range from contributing to the International Criminal Court’s indictment of Russian President Vladimir Putin for war crimes – to uncovering questionable marketing tactics by large pharmaceutical and tobacco companies – to expanding the understanding of how cancer cell mutation impacts treatment plans – to continuing to contribute data that helps us recover from COVID-19 and prepare for future pandemics. For this and other work, our faculty, staff, alumni, and students have received awards from organizations including the

American Public Health Association, the American Society of Health Economists, and Latinas and Power.

We have also leaned into practice. Our Activists in Residence, our leadership role in a new work-training program with the state of Connecticut, and our numerous international training partnerships (including a new program in Cambodia!) exemplify how we are translating best-in-class research into meaningful practices that make people healthier. YSPH community members have worked with local and global political leaders, written op-eds, helped local non-profit organizations develop plans for sustainability, launched or supported start-ups, and trained a next generation of leaders within and outside of YSPH.

As we embark on a transformational summer for the Yale School of Public Health, marking our school’s transition into full financial and administrative independence after more than 108 years, I am more excited than ever to see what the future holds.

Sincerely,

Megan L. Ranney, MD, MPH
Dean, Yale School of Public Health
C.-E. A. Winslow Professor of Public Health

TOP STORIES



CDC Grant Boosts Efforts to Reduce New Haven Health Disparities

A collaborative effort to reduce racial and ethnic health disparities in which the school is a leading partner received a \$3.4 million grant from the U.S. Centers for Disease Control and Prevention that will allow it to continue for another five years.

[READ MORE](#)



11 Years After Sandy Hook—A New Path Toward Healing and Hope

Activist in Residence Nelba Márquez-Greene (shown at the far right in photo) reflects on her survivor’s journey and the potential of public health to address America’s gun violence epidemic.

[READ MORE](#)



Analyzing How Cancer Mutations Interact May Improve Targeted Therapies

Cancer arises when multiple mutations result in relentless, inappropriate cell growth. But these mutations don’t act in isolation.

[READ MORE](#)



A Healthy Future for All

In her testimony before the U.S. Senate Judiciary Committee, Dean Megan L. Ranney urged Congress to support a public health approach to the nation’s gun violence crisis.

[READ MORE](#)

RESEARCH

COVID-19: New ‘Omics’ Models Show Why Some People Are at Greater Risk of Severe Disease, Death

Leying Guan, PhD, has developed new standards for harmonizing -omic, imaging, environmental, and health care data sets and then applying them to a variety of pressing health challenges.

Connecticut Emerging Infections Program Receives \$19.5 Million Grant

The Connecticut Emerging Infections Program received a five-year grant totaling approximately \$19.5 million from the U.S. Centers for Disease Control and Prevention.

Efforts to Attract Physicians to Underserved Areas Aren’t Working

A federal program aimed at attracting physicians to areas with critical shortages has not improved mortality rates or physician density.

Helping to Launch a Health Economics Program in Cambodia

Professor of Epidemiology Robert Hecht is collaborating with colleagues at Cambodia’s National Institute of Public Health (NIPH) to establish a Master of Public Health in Health Economics and Financing program. He is co-leading the project with Dr. Chhea Chhorvann, MD, NIPH director and dean of the School of Public Health in Cambodia.

How Tobacco Companies Use Chemistry to Get Around Menthol Bans

Regulating chemicals one-by-one has allowed the tobacco industry to skirt menthol bans by creating new additives with similar effects but unclear safety profiles.

Hepatitis Cases and Heart Valve Infection Deaths Tied to Early OxyContin Marketing

Infectious disease rates in the United States climbed as a direct long-term result of the marketing of OxyContin.

Studying Climate Change’s Negative Effects on Mental Health

Climate change-related disasters, like hurricanes and major floods, affect our well-being. Researchers are now looking at how our mental health is affected by slow-onset, chronic climate changes.

The Humanitarian Research Lab’s Global Impact

The International Criminal Court indicted senior military officials from Russia for targeted strikes on Ukraine’s power infrastructure. The court issued arrest warrants days after Yale released a report about systematic damage to Ukraine’s power grid.

Yale Cancer Center Researchers Awarded 2023-2024 Grants from the Breast Cancer Research Foundation

The grant-review process involves rigorous assessment and examination of creative new directions in clinical and translational breast cancer research in need of seed funding.

Yale Study: “Forever Chemicals” Promote Cancer Cell Migration

New research evaluates the relationship between PFAS and colorectal carcinoma.

Yale SCHOOL OF PUBLIC HEALTH BY THE NUMBERS

Independent in July

2024

200+
active grants

Articles published
to date

15,000

3:1
student-
faculty ratio



6,940
alumni in

50 states
and 75 countries



\$36,000

InnovateHealth Yale
awards to student-
led ventures.

6 academic
departments

21
centers and
initiatives

2024 graduates

29
PHD

78
MS

272
MPH



12
Yale joint
degree
programs

FACULTY HIGHLIGHTS



Abigail Friedman, associate professor in the Department of Health Policy and Management, has been appointed as the Yale School of Public Health faculty director of online and non-degree programs.



Xiaomei Ma is the interim chair for the Department of Chronic Disease Epidemiology for one year, with the possibility of renewal. She replaces **Judith Lichtman** who stepped down after nine and a half years as Chair.



Jason Hockenberry is the inaugural associate dean of faculty affairs. Hockenberry is well poised to lead, support and advocate for YSPH's faculty members.



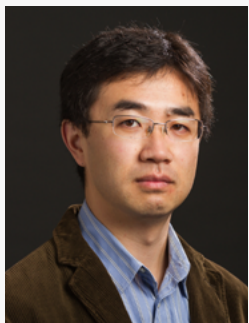
Bhramar Mukherjee is the inaugural senior associate dean of public health data science and data equity, an important new leadership position that reflects the school's focus on data science as a critical pillar for the future of public health.



Katelyn Jetelina has been named an adjunct professor effective July 1, 2024. She is the publisher of the [Your Local Epidemiologist](#) newsletter.



Senior Fellow and Lecturer **Kaakpema "KP" Yelapaala**, MPH '06, is the new faculty director of [InnovateHealth Yale](#). His appointment ushers in a new phase of innovation and entrepreneurship in public health.



Shuangge (Steven) Ma was appointed as the chair of the Department of Biostatistics. A respected scholar and teacher with a proven track record of success in both academic and administrative roles, Ma had served as interim chair of the Department of Biostatistics since July 2021.

FACULTY AWARDS



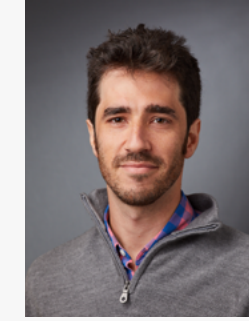
Kai Chen's students praised his dedication and commitment as a mentor in nominating him for the 2024 Distinguished Student Mentoring Award.



Jeannette Ickovics, the inaugural Samuel and Liselotte Herman Professor of Social and Behavioral Sciences received the 2023 Martha May Eliot Award from the American Public Health Association.



Michaela Dinan's students cited her "unparalleled commitment to student success" while fostering "a supportive and inclusive learning environment" in nominating her for the 2024 Distinguished Teaching Award.



Jacob Wallace, assistant professor of public health (health policy), was part of the team that won the [American Society of Health Economists' \(ASHEcon\) 2024 Willard G. Manning Memorial Award](#) for Best Research in Health Econometrics.



Michael Winger was lauded by his students for his versatility, active and inclusive instruction, and ability to deliver concepts "in fresh and innovative ways," in his nomination for the 2024 Distinguished Teaching Award.

Congratulations to the YSPH faculty who were awarded [YSPH Research Prizes](#) for manuscripts published in 2023:
 Zeyan Liew, Early Career Investigator Research Prize
 Yize Zhao, Investigator Research Prize
 Robert Heimer and Lauretta Grau, Team Science Prize
 Caroline Johnson, Krystal Pollitt, and Lingeng Lu, Team Science Prize
 Rafael Pérez-Escamilla, Impact Research Prize
 David Paltiel and Gregg Gonsalves, BS '11, PhD '17, Impact Research Prize

DEAN'S LECTURE SERIES



Mandy Cohen, MD '05, MPH, director of the U.S. Centers for Disease Control and Prevention, joined Dean Megan L. Ranney, MD, MPH, for a "fireside chat" about health care leadership and the future of public health on Oct. 5 as part of the Dean's Lecture Series.



Yale Innovation Summit

Dean Megan L. Ranney, MD, MPH, interviews Chelsea Clinton, the vice chair of the Clinton Foundation and one of the 2024 Yale Innovation Summit's keynote speakers.

TEACHING SPOTLIGHTS



Messaging Matters: Yale School of Public Health expands student communications training

Effective communications is an essential part of public health practice. The school recently expanded its communications training programs for students.

[READ MORE](#)

National Public Health Week

National Public Health Week in April featured daily themes such as Civic Engagement and Healthy Neighborhoods, plus a yoga class and other fun events.



Shared Humanity podcast

Activist in Residence Nelba Márquez-Greene talks to the humans behind the headlines of gun violence. As they share their stories they inspire us toward positive change and hope.



Teaching the Bayesian paradigm

Josh Warren teaches Bayesian Statistics, which allows students to adapt statistical frameworks based on data characteristics.

[READ MORE](#)



Teaching Implementation Science

Luke Davis uses a feedback-driven approach to teaching implementation science, while encouraging a growth mindset.

[READ MORE](#)

ALUMNI HIGHLIGHTS



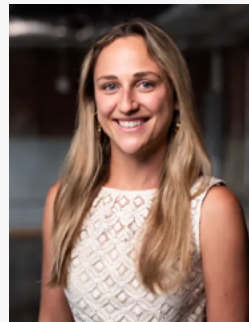
A recipient of the prestigious 28th Heinz Awards, **Kathryn Finney**, MPH '00, was recognized in October by the Heinz Family Foundation for disrupting the status quo in the tech field and boldly breaking down barriers that have long hindered Black and Brown women from entering the startup ecosystem.



Pamela Sutton-Wallace, MPH '97, was named president of Yale New Haven Health (YNHH). Sutton-Wallace joined YNHH in July 2022 as chief operating officer, helping to guide the health system out of the pandemic and into its future role as an academic health system.



Binh Phung, MPH '23, created a free clinic for refugee children, inspired by his personal journey as a child refugee from Vietnam. Phung is keenly aware that children make up a significant percentage of forcibly displaced individuals worldwide.



Kayla Wooley, MPH '21, is founder and CEO of StaffOnTap and Nurse Ranger, two SaaS platforms that help health care companies optimize nursing home staffing to improve the quality of elder care.

IN THE MEDIA

BEHAVIORAL HEALTH BUSINESS

'This is Cause for Alarm:’ Abstinence-Only Opioid Treatment Is Deadlier Than None, Study Says

Quotes Robert Heimer, professor of epidemiology and pharmacology.

CNN

As Guns Rise to Leading Cause of Death Among US Children, Research Funding to Help Prevent and Protect Victims Lags

Quotes Dean Megan L. Ranney.

CNN

Trust in Science is Declining. Here’s How We Can Regain It.

Opinion by Megan L. Ranney and Katelyn Jetelina.

MEDPAGE TODAY

Moving Forward with Diversity in Medicine After SCOTUS Decision

Quotes Associate Professor Ijeoma Opara.

THE NEW YORK TIMES

Serious Medical Errors Rose After Private Equity Firms Bought Hospitals

Quotes Zack Cooper, professor of public health and economics.

THE WASHINGTON POST

Brazil’s Staggering Dengue Fever Crisis is a Warning to the World

Quotes Albert Ko, professor of epidemiology.

UCONN TODAY

UConn Public Health Students Gain Hands-on Experience Through Department of Public Health Fellowship Program

Mentions the Office of Public Health Practice.

GIVING TO YSPH



Data, Leadership, and Collaboration

A gift from Indra Nooyi and Raj Nooyi will help train tomorrow’s public health leaders.

Yale School of Public Health (YSPH) has long emphasized both data science and data-driven health leadership. Equitable data science makes transformational and impactful research possible, resulting in innovations that advance and improve public health, from identifying new cancer treatments to creating guidelines reducing pollution’s health impact.

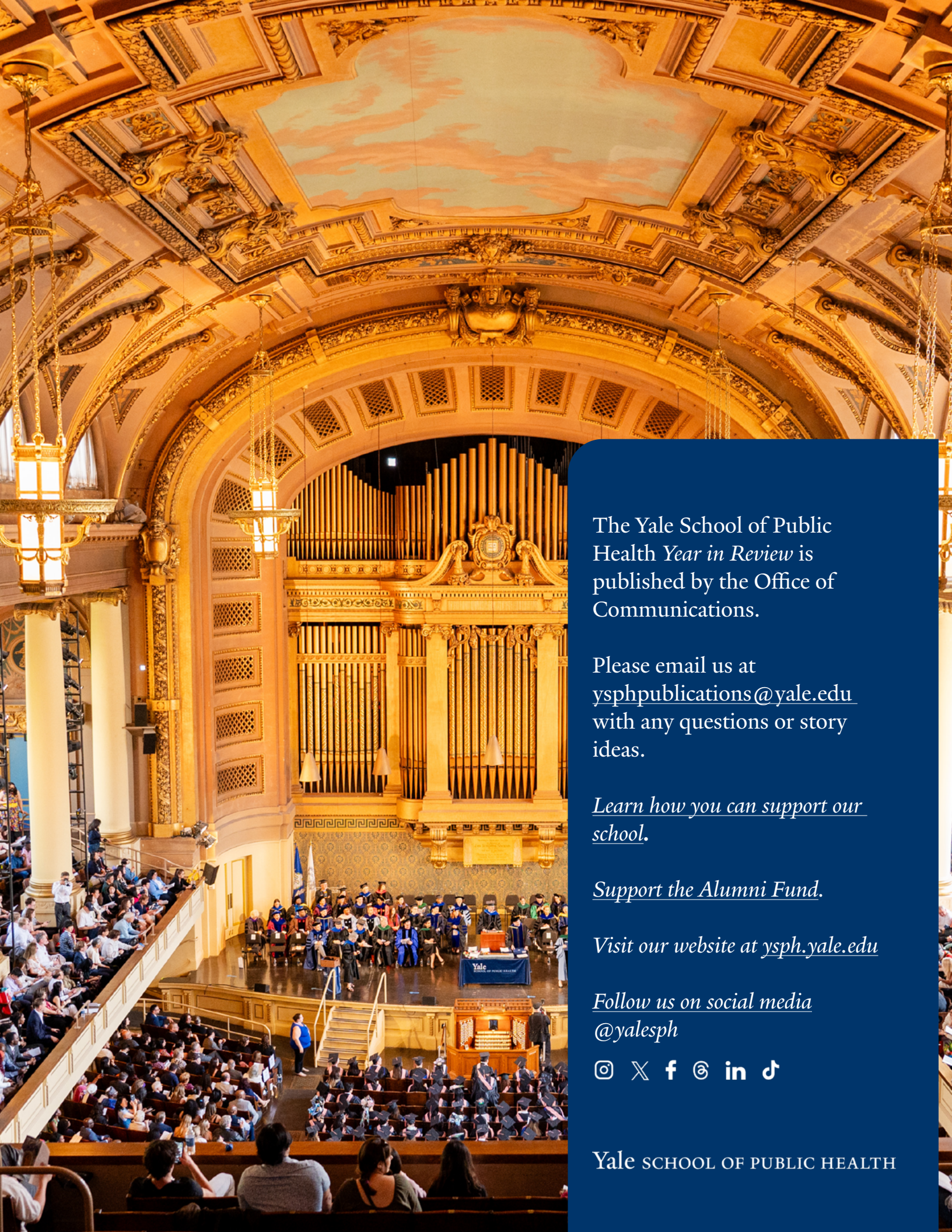
A new two-part gift to YSPH builds on this fundamental focus on data, while supporting an ongoing, collaborative educational program with the Yale School of Management (SOM). The gift, from former PepsiCo CEO Indra Nooyi, a 1980 graduate of the Yale School of Management, and her husband Raj Nooyi, will advance the school’s efforts to train students as leaders in data-driven public health improvement of people’s wellbeing at local, national, and global scales. The Nooyis have previously supported YSPH with an endowed professorship.

“I am so grateful to Indra and Raj for their

strategic, farsighted support of these two important programs,” said YSPH Dean Megan L. Ranney. “We can’t be great public health data science leaders without investment – or without partnerships.”

“The Yale School of Public Health has a long record of accomplishment in data-driven, impactful research. During the COVID-19 pandemic, its researchers provided policymakers in Connecticut and internationally with timely data-driven insights to help guide emergency response. The school also educates future leaders who use public health data science and data equity to enable transformational research in the face of quickly changing methods, technology, and societal shifts,” says Indra Nooyi. “That track record was a significant factor in our decision to support the school.”

[READ MORE](#)



The Yale School of Public Health *Year in Review* is published by the Office of Communications.

Please email us at ysphpublications@yale.edu with any questions or story ideas.

Learn how you can support our school.

Support the Alumni Fund.

Visit our website at ysph.yale.edu

Follow us on social media
@yalesph



Yale SCHOOL OF PUBLIC HEALTH